



---

# SAFER PATH FAMILY VIOLENCE SHELTER

## ANNUAL REPORT

FY 2023

---

Platinum  
Transparency  
2023

**Candid.**



*Safer Path*  
FAMILY VIOLENCE SHELTER

Thank you for supporting Safer Path Family Violence Shelter last year.

As we close 2023 and look forward to 2024, I hope you see the impact your giving has on our organization.

We've been a small and scrappy organization for 30+ years. We have grown tremendously over the last 5 years because of your generosity and support.

We strive for the highest standard of transparency. Through this report, we want to show you that we are doing what we say we are doing. Our work matters. We are serving families who need us.

We focus on the things that matter.

Our Strategic Goals for 2024 are about increasing our capacity and building community. We seek to increase our capacity. This includes finding space for more shelter bedrooms. We also want to invest in our staff to build new skills and abilities. This will help us do this work long-term. We seek to build community with survivors through enhanced programming. We seek to build community with our staff through better training and documentation of processes and procedures. Additionally, we aim to build community with our community. We will do this through training, enhanced outreach, and new engagement opportunities.

Your financial support is what propels our mission and strategic priorities forward. One survivor, one hotline call, one training, one team-member at a time.

**THANK YOU!**

Rhonda Williamson, Executive Director

## OUR MISSION

**To build awareness of family violence and sexual assault by empowering victims, supporting survivors healing and creating safe and abuse free communities.**





## CLIENT-CENTERED

We believe our clients. We do not judge blame, or question their choices. We are compassionate, patient, flexible, present, and empathetic. We understand the importance of confidentiality. Clients are not overlooked, made to feel incapable, or talked down to. We are someone's support system, we are advocates, and we do not drop the ball.



## EMPOWERING TEAMWORK

We respect and own our personal experiences. Our foundation is dependable, supportive, strong, humorous, creative, dedicated and persistent. We work together to build relationships with trust, understanding, and valuing each other's differences, despite the hardships.



## LEADERSHIP

We respect and own our personal experiences. Our foundation is dependable, supportive, strong, humorous, creative, dedicated and persistent. We work together to build relationships with trust, understanding, and valuing each other's differences, despite the hardships.



## SECURITY

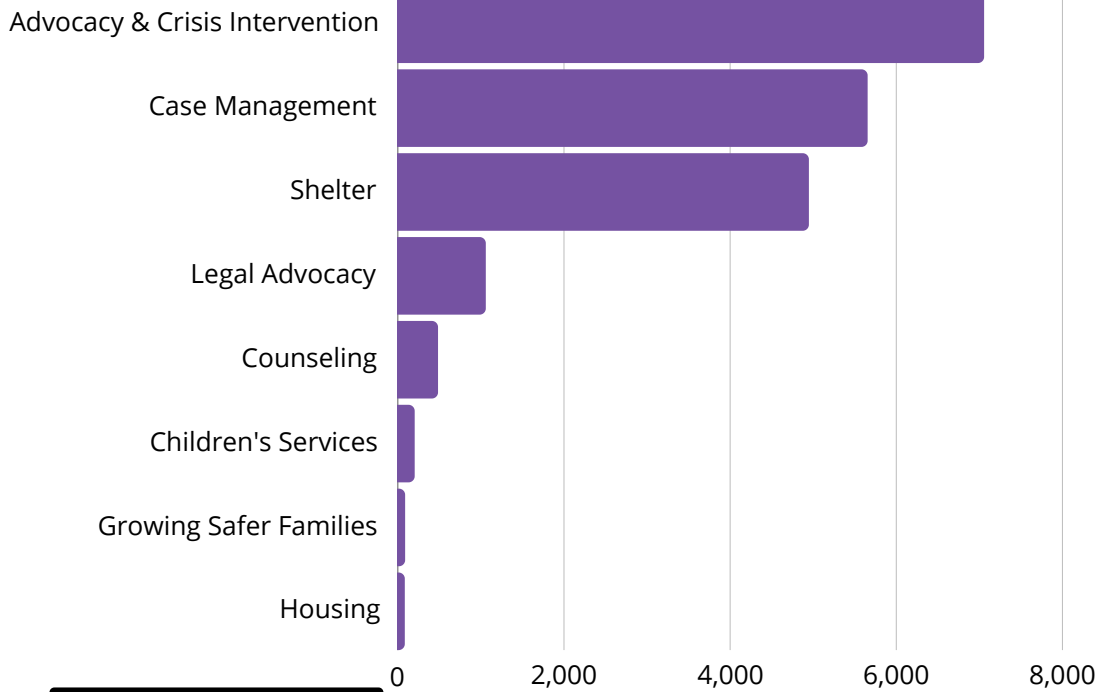
We are vigilant with the safety of our staff and clients because lives depend on it. It is our duty to provide a safe place to prepare a framework for a secure future.

## HOPE



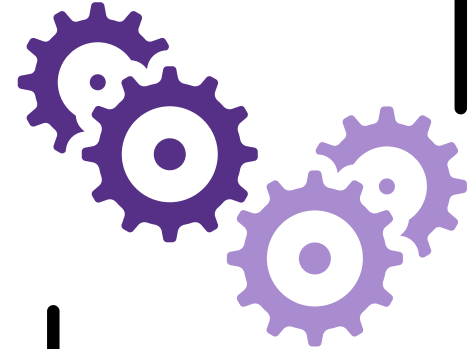
We provide education, prevention, and change to move families from victims to survivors; thereby creating hope for the future.

## SERVICE NUMBERS



Total Services

**19,550**



Services Provided  
FACE to FACE

**13,350**

Residential

**9,117**



Non-Residential

**10,433**

Hotline  
Calls

**2,903**



Hotline  
Hours

**244.96**

Number of Clients

**483**



Other  
9.5%

Black-African American  
4.8%

Non Hispanic/Non Latino  
13.9%

Male  
36%

Gender

Female  
64%

Highest Service  
Month

**2,225**



Every Month Had  
More Than

**1,000**

Services Provided

Ethnicity

Hispanic/Latino  
68.9%

## GROWING SAFER FAMILIES PROGRAMS

### Prevention & Education



**A.D.V.A.N.C.E.**  
(Acknowledging Domestic Violence & Navigating Child Protection Efficiently)

A seven-week psycho-educational group. Created for CPS-involved clients to address issues faced by domestic violence victims and impacts on children.



**R.I.S.E.**  
(Resources & Information for Survivor Empowerment)

A one-time, two-hour class to help the victim gain support and learn skills for navigating a relationship they want to stay in, but one where the violence stops.



**B.I.P.P.**  
(Batterer's Intervention Prevention Program)

Twenty four week discussion-based group focused on personal change to end abusive behavior. BIPP groups give tools to end abuse, whether it's physical, verbal, emotional. This type of intervention can help them break the cycle of abuse.



**SAFE DATES**  
Junior High and High School Curriculum

A ten-session dating abuse prevention program for middle/high school students. Program provides students with the skills to prevent dating violence by changing dating violence norms and gender stereotyping, improving conflict-management skills, help-seeking behavior, and other cognitive factors associated with help-seeking.

## ADVOCACY

### Support Groups & Task Forces



**Domestic Violence Support Group**

A Support Group for domestic violence survivors that provides a safe and empathetic space where individuals can come together to share their feelings, experiences, and coping strategies.



**Sexual Assault Support Group**

A support group every other Wednesday for sexual assault survivors that provides a safe and empathetic space where individuals can come together to share their feelings, experiences, and coping strategies.



**Coordinated Community Response Team (CCRT)**

**Sexual Assault Response Team (SART)**

CCRT & SART bring together key players in community systems, usually on a county-wide basis, to develop strategies and procedures aimed at strengthening our community's and systems' response to domestic violence and sexual assault.





## Count Me In Volunteer Program

Shelters function because of the work of volunteers. We need the time, talent, and compassionate care of dedicated volunteers to end domestic violence. We gladly welcome groups, organizations, or individuals who are interested in serving with us.



### HOTLINE

Help us meet the increased volume of calls to our 24-hour hotline. Must complete 20 hrs of training and a background check to serve.



### CHILD CARE

Help support a client as she gets back on her feet by providing on-call child care support. Must complete background check to serve.



### BEGIN AGAIN THRIFT STORE

Our store saw extreme increases in donations in 2022 thanks to the amazing community who continues to support Safer Path. Help us continue to thrive by processing, sorting, and tagging donations. Flexible hrs. no training!



### SPECIAL PROJECTS

Help support Safer Path by volunteering to do what you do best. Love to garden, build, cook meals for lots of people, paint, or something else? Let's talk about how you and your group can help bring some light to our clients while they are rebuilding their lives.



## BECOME A DONOR THE IMPACT OF YOUR GIFT

**\$25**

ID DOCUMENTS  
FOR A PERSON

**\$50**

MEALS FOR  
A FAMILY

**\$100**

1 NIGHT  
OF SHELTER

**\$500**

1 MONTH OF  
SERVICES FOR A  
FAMILY

**\$1,000**

24-HOUR EMERGENCY  
HOTLINE COVERAGE

**\$2,000**

EVENT  
SPONSOR



## DONATE TODAY!

**Remember:** ALL donations to  
SPFVS are tax-deductible!



## REVENUE

RESTRICTED GRANTS.....	\$926,581.48
INDIVIDUAL DONATIONS.....	\$240,782.40
THRIFT STORE INCOME.....	\$288,757.69
FOUNDATION DONATIONS.....	\$73,500.00
CORP/CHURCH DONATIONS.....	\$19,317.70
PROGRAM FEES.....	\$6,155.73
LOCAL GOVT DONATIONS.....	\$127,500.00
<b>TOTAL REVENUE.....</b>	<b>\$1,682,595.20</b>

## EXPENSES

SALARY & BENEFITS.....	\$1,064,375.52
DIRECT CLIENT ASSISTANCE.....	\$122,246.03
OCCUPANCY.....	\$131,618.97
FUNDRAISING.....	\$46,104.96
EQUIP & SUPPLIES.....	\$51,030.97
THRIFT STORE.....	\$34,421.85
PROF. LIABILITY INSURANCE.....	\$31,760.05
AUTO/TRANSPORTATION.....	\$12,671.93
MARKETING.....	\$7,143.26
PROFESSIONAL FEES.....	\$26,045.50
TRAVEL & TRAINING.....	\$20,556.11
DUES, FEES, & OTHER.....	\$60,086.04
<b>TOTAL EXPENSES.....</b>	<b>\$1,608,064.19</b>

## OVERVIEW

In 2023 the need for Safer Path only grew. Though we are small we are mighty. We take on every challenge with a we can figure this out approach. One obstacle we keep coming across is that we are consistently FULL at shelter. This means we have to turn away people in need. In 2023 we had some of the highest numbers of services seen since COVID year. We aren't sure what the change in numbers can be attributed to this year but we know that with these numbers comes the real conclusion that we need to expand to accommodate for the increase of need for shelter. What does this look like? This looks like raising more money to either find a space big enough to move advocates into a bigger admin in order to make more space at shelter for residents OR build a location that will fit our current needs and sustain us through continued increase in services needed.

As the need for Safer Path in the community grows we will continue to grow and evolve as well.



## BEGIN AGAIN THRIFT STORE

Begin Again Thrift Store is Safer Path's retail operation and donation center offering quality clothing, home decor and books at affordable prices. Not only does our store provide the community an eco-friendly solution for recycling items, it also provides these items at no cost to families we serve through our voucher system. The vouchers allow clients and the clients of our partners in the community, and to find items they want and need with the dignity of choice in a retail environment that aids in rebuilding their lives.

In 2023 we experienced an increase in donations, so much so that some days we needed to close the store to go through inventory. We are so incredibly grateful for how this community has rallied behind us and continues to go above and beyond.

## GUIDING LIGHT - \$25,000+

Valero Energy Foundation

## GUARDIANS - \$10,000+

James & Lori Donnell Jr.  
John G. & Karen B. Northcut  
Philip & Jessica Tom  
The Carroll & Marguerite Wheeler Foundation

## HEROES - \$5,000+

Amador Garza  
HB Family Foundation  
Joel & Debbie McDaniel  
John H & Judy Northcut  
Nancy Tom  
Roxana Tom  
Tilden Baptist Church  
The Tom Family Fund

## PROTECTORS - \$2,000+

CGB Gym  
Charles and Gina Langley  
City of Jourdanton  
Cummins Welding LLC  
David & Deborah Longan  
EnerCorp  
First Commercial Bank  
Gaydos Construction LLC  
Genny Rakowitz  
Glyn Spence Stultz  
Hayden Interests, LLC  
Innospec Limited  
James Johnson  
J.J. & Candace Trevino  
Kendra Scott  
Lacie Young  
McDaniel Family Limited Partnership  
Merry Solis  
Pleasanton Country Club  
Rhino Operating Company LLC  
Safe Haven at Whispering Oaks  
Sherry Gaydos  
The Happy Dudes  
Tim & Shirley Jambers  
Timothy Wilhelm  
Woman's Club of Pleasanton



## ADMINISTRATIVE BUILDING

506 W. Adams St.  
Pleasanton, TX 78064  
(830)-569-2001  
[www.saferpathfvs.org](http://www.saferpathfvs.org)

## ADVOCATES - \$1,000+

Al & Deana Steinle  
Bryson & Tiffany Elliott  
Children's Alliance of South Texas  
Eleanor Burrous  
H-E-B  
Janet Kippenberger  
Jessica Putz  
Joaquin & Sally Ramirez  
John & Pamela Hughes  
Joseph W. Freeland Interests, LLC  
J.W. Hughes Excavation, INC  
Katherine Bratten  
Kevin & Sarah Aniol  
Law Office of Jaime J. Trevino Jr  
PLLC  
Mary Steele

## SUSTAINERS - \$500+

Alonzo Garza  
Amber Marcil  
Atascosa Bank  
Atascosa Counseling Services  
Audrey Brister  
Barbara Peeler  
Bryan Lankford  
Carolyn Denise Lowe  
Christal Martinez  
Coastal Bend College  
Conway and Associates  
Cynthia Veselka  
David & Sarah Mills  
Dollface Den  
F M Roberson  
Frank & Nancy Turner  
Impact Holdings LLC dba Land  
N Texas  
Joe Stockhorst  
John Brymer

Melissa Dupee  
Methodist Healthcare Ministries  
Pleasanton Finance Company  
Rideout Barrett & Co.  
Sharanda Johnson  
Sierra Services  
South Texas Automotive Repair  
South Texas Electric Cooperative, INC.  
Susan Whitlow  
The Gil & Dody Weaver Foundation  
The Olive Branch Flowers & Gifts, LLC  
Tournament Targets, Inc  
Wayne & Sherrill Swaim  
William & Ida Kaiser  
5-L Liquor LLC Poteet Store

John & Elizabeth Netardus  
Kara Jackson  
Larry Jones  
Lewis Cantu  
Maria Vera  
Mary Cardenas  
Murray & Sallie Swaim  
Poteet Auxiliary VFW Post 6970  
Priscilla and Orlando Garza Jr.  
Quilted Hearts Charity Sew Group  
Quirt McClendon  
Rakowitz Engineering  
Rhonda Wilson Williamson  
Richard Lilly  
Roxanne Below  
Ruth Henry  
Samantha Fitzsimmon  
Shane Schychart  
St. John Lutheran Church of Jourdanton  
Tina Lankford



## MAILING ADDRESS

P.O. Box 688  
Pleasanton, TX 78064



## BEGIN AGAIN THRIFT STORE

201 N. Main St.  
Pleasanton, TX 78064  
(830)399-0693



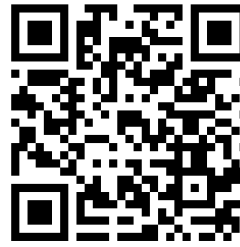
**Safer Path**  
FAMILY VIOLENCE SHELTER



# UPCOMING EVENTS

## SWING INTO ACTION GOLF TOURNAMENT

Play 18 holes at the beautiful Pleasanton Country Club in a two-man scramble. Get with your friends, family or co-workers and form a team for a fun day of golf. Golfers of all ages and abilities are invited. Sponsorships are available, dinner is provided. Wear your best and brightest purple golf attire to show your support of our mission.



Sign-up &  
Sponsor Here

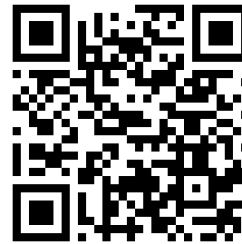


**GOLF TOURNAMENT**

**April 20th, 2024**

## BAGS & BLING BINGO

This all-in-good-fun event combines ladies' night out and the chance to take home a beautiful new handbag or shiny new piece of jewelry, all while raising money for a good cause. This event has sold out for the last three years and our sponsors have been treated to all kinds of perks. Make plans early to join us because tables go FAST.



Sign-up &  
Sponsor Here



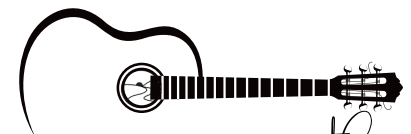
**July 11th, 2024**

## A NIGHT OUT WITH SAFER PATH

An exclusive night crafted for an evening of FUNdraising. Join us for a delightful steak dinner, complemented by the ambiance of live entertainment. It will be more than just a night out; it will be an opportunity to dine with purpose.



Sign-up &  
Sponsor Here



**A NIGHT OUT with  
SAFER PATH**

**October 26th, 2024**



@SaferPathFamilyViolenceShelter

[www.saferpathfvs.org](http://www.saferpathfvs.org)

@saferpathfvs